



ARGHAVAN TILE



OUTDOOR

Z10 mm

60*60 mm

2021

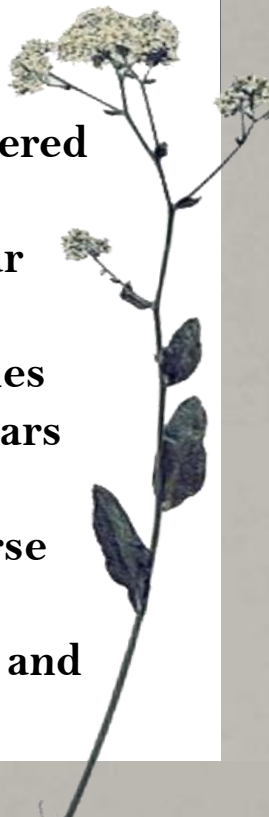
Iran has a significant ranking in the field of mines and construction industries such as ceramic tiles in the world and is also one of the strong suppliers and exporters in the Middle East in the field of ceramic tiles and construction industries.

Arghavan Tile Company, using the latest technology in the world, electronics and information technology, with a great focus on design and recognizing Iranian tastes, along with experienced and specialized personnel and experienced managers with a wealth of experience and knowledge, started its activities in 2001. It has started in Yazd (the center of Iranian ceramic tiles).

In 1392, Arghavan company expanded and developed its activities, first by obtaining official representation and then in the form of Arghavan, Lexus, Navazesh, Lani and Yara brands in Goldis, Arg, Emarat, Bastan, Parsian, Saadi, Kashi Yazd and .. Produces and distributes.

In addition to the domestic market, Arghavan Company started exporting to Iraq and then entered the markets of Georgia, Afghanistan, Pakistan, Turkmenistan, Armenia, Azerbaijan, Syria, Qatar and Oman.

The company currently has 3 prestigious branches and warehouses in Yazd province and with 19 years of experience and technical and scientific aristocracy, is proud to be able to meet the diverse needs of dear customers by producing and distributing various types of ceramic, porcelain and sanitary tiles. And be respected suppliers.

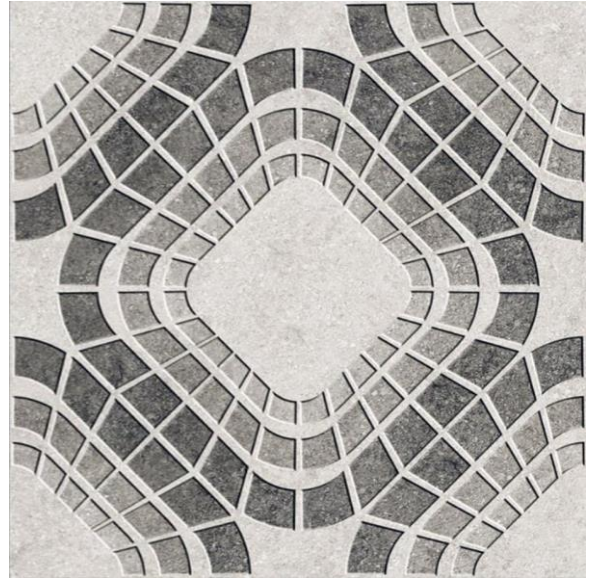




Luka
Beige
Porcelain
Matt
60*60



Luka
Gray
Porcelain
Matt
60*60



Thickness (Mm)	Psc per Ctn.	Ctn. per Pallet	Sq.m ² per Ctn.	Wgt per Ctn. (Kg)	Sq.m ² per Pallet	Wgt per Pallet (Kg)
10	4	36	1.44	32	51/84	1110



ARGHAVAN TILE





Victoria
A1
Porcelain
Matt
60*60



Victoria
A2
Porcelain
Matt
60*60



Thickness (Mm)	Psc per Ctn.	Ctn. per Pallet	Sq.m ² per Ctn.	Wgt per Ctn. (Kg)	Sq.m ² per Pallet	Wgt per Pallet (Kg)
10	4	36	1.44	32	51/84	1110



ARGHAVAN TILE





Cliff
A1
Porcelain
Matt
60*60



Cliff
A2
Porcelain
Matt
60*60



Thickness (Mm)	Psc per Ctn.	Ctn. per Pallet	Sq.m ² per Ctn.	Wgt per Ctn. (Kg)	Sq.m ² per Pallet	Wgt per Pallet (Kg)
10	4	36	1.44	32	51/84	1110



ARGHAVAN TILE





Stone
A1
Porcelain
Matt
60*60



Stone
A2
Porcelain
Matt
60*60



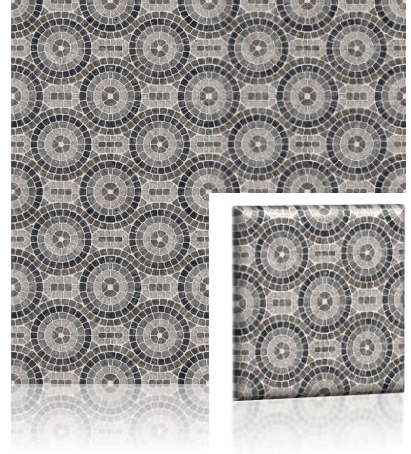
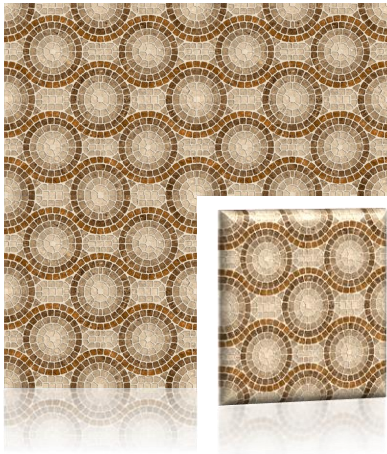
Stone
A3
Porcelain
Matt
60*60



Thickness (Mm)	Psc per Ctn.	Ctn. per Pallet	Sq.m ² per Ctn.	Wgt per Ctn. (Kg)	Sq.m ² per Pallet	Wgt per Pallet (Kg)
10	4	36	1.44	32	51/84	1110

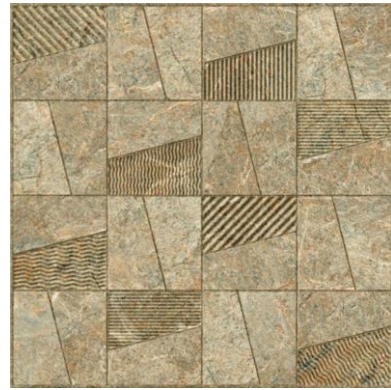


ARGHAVAN TILE





**Q-Bic
A2
Porcelain
Matt
60*60**



**Q-Bic
A1
Porcelain
Matt
60*60**



**Q-Bic
A4
Porcelain
Matt
60*60**



**Q-Bic
A3
Porcelain
Matt
60*60**

Thickness (Mm)	Psc per Ctn.	Ctn. per Pallet	Sq.m ² per Ctn.	Wgt per Ctn. (Kg)	Sq.m ² per Pallet	Wgt per Pallet (Kg)
10	4	36	1.44	32	51/84	1110



ARGHAVAN TILE





ARGHAVAN TILE